

**NELSON CITY COUNCIL  
PARKING AND VEHICLE  
CONTROL BYLAW 2011  
(No 207)**

**Incorporating Amendment 1: December 2012**

## **TABLE OF CONTENTS**

<b>PART I - INTRODUCTION .....</b>	<b>1</b>
1. INTRODUCTION .....	1
2. RESOLUTIONS PURSUANT TO THIS BYLAW .....	1
3. DEFINITIONS .....	1
<b>PART II - PARKING CONTROL .....</b>	<b>4</b>
4. MANAGEMENT OF PARKING, STANDING AND STOPPING .....	4
5. PARKING AND STANDING IN SPECIAL PARKING AREAS .....	4
6. METERED AREAS, AND PAY AND DISPLAY AREAS.....	4
7. RESERVED PARKING AND PARKING AUTHORISED BY PERMIT.....	5
8. PARKING CONCESSIONS FOR MOBILITY PARKING PERMIT AND SENIOR PARKING PASS HOLDERS.....	5
9. CORRECT METHOD OF PARKING .....	6
10. MISCELLANEOUS PARKING PROVISIONS .....	6
<b>PART III - VEHICLE CONTROL.....</b>	<b>7</b>
11. ONE WAY STREETS .....	7
12. SKATE BOARDS, ROLLER SKATES, INLINE SKATES AND WHEELED RECREATIONAL DEVICES .....	7
13. HEAVY VEHICLES.....	7
14. SHARED PATHS .....	7
15. SHARED ZONES (ROADS) .....	8
16. PEDESTRIAN CROSSINGS .....	8
17. SPECIAL VEHICLE LANES .....	8
<b>PART IV - OFFENCES, PENALTIES AND EXEMPTIONS .....</b>	<b>9</b>
18. OFFENCES .....	9
19. PENALTIES FOR PARKING OFFENCES.....	9
20. PENALTIES FOR OTHER OFFENCES.....	9
21. ADDITIONAL PROVISIONS UNDER THE ACT .....	10
22. REMOVAL OF VEHICLES .....	10
23. ENFORCEMENT OFFICERS .....	10
24. EXEMPTIONS.....	10

## PART I - INTRODUCTION

### 1. INTRODUCTION

- 1.1 The Nelson City Council, in pursuance of the powers and authorities, vested in it by the Local Government Act 1974 and 2002, The Bylaws Act 1910, the Land Transport (Road Safety and Other Matters) Amendment Act 2011 and all other Acts, powers and authorities enabling it in that behalf, hereby makes the following bylaw.
- 1.2 Council may appoint parking enforcement officers under Section 128D of the Land Transport Act 1998 and their powers to enforce are given by this Bylaw and Section 128E of the Land Transport Act 1998.
- 1.3 This Bylaw may be cited as the Nelson City - Parking and Vehicle Control Bylaw (207).
- 1.4 This Bylaw shall apply within the Nelson City Council local authority area.
- 1.5 These Bylaws shall come into force on the 15<sup>th</sup> day of December 2011.

### 2. RESOLUTIONS PURSUANT TO THIS BYLAW

- 2.1 Where any resolution of Council is required to specify any land, road, special parking area, time limited or other parking area, pedestrian crossing, direction of travel, vehicle control or any other thing whatsoever such requirements shall be deemed to have been complied with if such specifications are contained in any Schedules attached to such resolution.
- 2.2 Every resolution made pursuant to this bylaw may from time to time be amended or rescinded by a further resolution of Council, and any schedule to this bylaw may be amended in whole or in part, or removed by a further resolution of Council.
- 2.3 For the purposes of this clause "bylaw" includes any resolution made pursuant to this bylaw and any consequential changes to this bylaw or the schedules.

### 3. DEFINITIONS

- 3.1 All words or expressions not defined in this Bylaw shall, unless the context otherwise requires, have the same meaning as those words or expressions have in the Land Transport (Road User) Rule 2004, Land Transport (Offences and Penalties) Regulations 1999 or Section 2(1) of the Land Transport Act 1998.
- 3.2 Act - Means the Local Government Act, 2002, and any amendments to that Act.

**Authorised Period** – Means the time period specified on any parking permit issued by a vending machine or otherwise issued by Council, or the time for which the appropriate fee had been paid in respect of any parking meter, which represents the time for which a vehicle may be lawfully parked in a parking space within a pay and display area or metered area.

**Carpooling Spaces** - Means parking spaces which by resolution of the Council have been set aside as a place where vehicles with a carpooling permit can park.

**Carpooling permit** - Means a permit issued by Council in accordance with the carpooling policy and procedure.

**Council** - Means the Nelson City Council and including any person, authorised by the Council to act on its behalf.

**Metered Area** - Means any land or road or part thereof under the control of the council which by resolution of the Council is set aside as a place where motor vehicles may park and in or on which a parking meter or parking meters are established and maintained.

**Owner**, in relation to a vehicle, - Means the person lawfully entitled to possession of the vehicle, except where-

- (a) The vehicle is subject to a bailment that is for a period not exceeding 28 days; or
- (b) The vehicle is let on hire pursuant to the terms of a rental-service licence.

in which case **Owner** means the person who, but for the bailment or letting on hire, would be lawfully entitled to possession of the vehicle; and "owned" and "ownership" have corresponding meanings.

**Parking Meter** - Means a meter including the stand to which such meter is attached, installed at a parking space or to serve more than one parking space within a metered area, and which is designed to indicate the authorised period for any vehicle parked within the parking space to which the meter relates.

**Parking Permit** - Means a ticket obtained in the manner prescribed by this bylaw, allowing a vehicle to use a space in a pay and display area for the authorised period designated on the ticket.

**Pay and Display Area** - Means any area of land belonging to the Council or under the Council's control including a road or part of a road, which is designated by resolution of the Council to be used as a place where motor vehicles may only park if they display a current parking permit.

**Parking Space or Space** - Means any part of a road or of land under the control of the Council which is marked out by white lines for the parking of a motor vehicle and includes a parking space in a pay and display area, a parking space in a special parking area, a parking space in a metered area, and a parking space in a time Limited Parking Area.

**Prescribed Fee or Fee** - Means the charge prescribed by resolution of the Council pursuant to this bylaw, as the fee payable for parking at or using a metered space or a parking space within a pay and display area.

**Prohibited Area** - Means those footpaths within the areas defined on the maps contained within Schedule 2 hereto.

**Resident Parking Scheme** - Means the provision on any road or on any land under the control of the Council of parking places for residents pursuant to a policy adopted by resolution of Council under this Bylaw, which may include provisions relating to the parking of vehicles used by non-residents.

**Resident Permit** - Means a permit to park a vehicle on a road, or any land under the control of the Council, supplied by the Council under this Bylaw to a resident, in accordance with a resident parking scheme.

**Senior Parking Pass scheme** - Means a scheme which allows drivers of 65 years age or older with a valid drivers licence to apply for a Senior Parking Pass which allows concessions on parking in the Central Business District. (Deleted from schedule July 2015)

**Special Parking Area** - Means any land or road or part thereof under the Control of the Council which by resolution of the Council has been designated or reserved for the stopping of any specified class or type of vehicle, and includes bus stops, taxi stands and loading areas.

**Stopping** - Shall include "parking" and "standing".

**Use** in relation to a vehicle, includes driving, drawing or propelling by - Means of another vehicle and permitting to be on any road; and "to use" and "user" have corresponding meanings.

## PART II - PARKING CONTROL

### **4. MANAGEMENT OF PARKING, STANDING AND STOPPING**

- 4.1 Every person must stop, stand or park any vehicle under their control in compliance with the parking and stopping restrictions, reservations, and prohibitions imposed in accordance with the clauses of this Part of this Bylaw (Part II Parking Control) as indicated by the display of signs and, as appropriate, road markings.
- 4.2 The Council may from time to time, by resolution and defined in the Schedules to this Bylaw, regulate the stopping, standing or parking of vehicles on a road under its control, by any of the following means:
- (a) prohibiting it entirely;
  - (b) prohibiting it for a specified class or description of vehicle;
  - (c) restricting it to only vehicles of a specific class or description; or
  - (d) restricting its duration or the times during which it can occur;
  - (e) temporary discontinuance of parking spaces.
- 4.3 For the purposes of clause 4.1 and 4.2 above a motor vehicle shall be deemed to have been continuously parked in a Time Limited Parking Area notwithstanding that it may have been moved or driven from the original place the vehicle was parked, if the vehicle remains within the extremities of the Time Limited Parking Area after such movement.

### **5. PARKING AND STANDING IN SPECIAL PARKING AREAS**

#### **Resident Parking Spaces**

- 5.1 The Council may by resolution establish, alter or cancel Resident Parking Spaces as defined in Schedule 7 (Resident Parking Spaces) in respect of any road or land or part thereof under its control where it considers that it is not practicable for on site parking places to be provided to serve any property or properties having frontage to such road.

#### **Carpooling Parking Spaces**

- 5.2 The Council may by resolution establish, alter or cancel Carpooling Parking Spaces as defined in Schedule 4 (Special Parking Areas – Car Pooling Spaces) in respect of any road or land or part thereof under its control where it considers that there is a need.

### **6. METERED AREAS, AND PAY AND DISPLAY AREAS**

- 6.1 The Council may from time to time by resolution, as defined in Schedule 5 (Metered Parking including pay and display) and Schedule 8 (Time Limited Parking Areas):
- (a) designate a road, a parking place, a public place, any piece of land owned or controlled by the Council, or part thereof, to be a metered area or made a pay and display area, either at all times or only during certain specified times;
  - (b) determine fees and charges payable for the parking of a vehicle in a metered or pay and display area (which may differ between pay and display areas and as to times and to maximum duration of parking);

- (c) specify the maximum time allowed for the parking of a vehicle in a metered or pay and display area; or
  - (d) specify the method of payment and the use of pay and display meters and pay and display areas.
- 6.2 Every person who stops, stands or parks a vehicle in a pay and display area must:
- (a) pay the prescribed fee provided for in Schedule 11 (Method of Payment and Prescribed Fees and Charges); and
  - (b) display evidence of payment; and
  - (c) remove the vehicle prior to expiry of the time for which the fee has been paid, and prior to the maximum permitted and signposted duration of time.

## **7. RESERVED PARKING AND PARKING AUTHORISED BY PERMIT**

- 7.1 The Council may by resolution or application reserve any parking space for the exclusive use of a specified category of user, either at all times or only during certain specified times, in accordance with Council's policy for reserved parking as may be determined from time to time by Council resolution.
- 7.2 The Council may on application by any person, reserve a parking space and thereby entitle that person or their authorised agent to the exclusive right to park a vehicle in that parking space during the period authorised, in accordance with Council's policy for reserved parking as may be determined from time to time by Council resolution.
- 7.3 The Council may by resolution determine fees and charges for the exclusive use of a parking space reserved in accordance with Clauses 7.1 and 7.2 and issue a parking permit which sets out the identification of the vehicle and the authorised person (or agent), the location of the reserved parking and the duration of the authorisation.
- 7.4 Any authorised person, or their agent, who parks a vehicle in a reserved space must pay the prescribed fee and display the form of authorisation required by the Council, or display the parking permit relating to that space, so that it is clearly legible through the front windscreen of the vehicle, or in the case of a motorcycle, is attached to the vehicle in a manner whereby it is legible by a parking warden.

## **8. PARKING CONCESSIONS FOR MOBILITY PARKING PERMIT AND SENIOR PARKING PASS HOLDERS**

- 8.1 The following concession applies for mobility parking permit holders in Time Limited Parking Areas:
- (a) P30 allowable time doubled to a maximum of 60 minutes;
  - (b) P60 allowable time doubled to a maximum of 120 minutes.
- 8.2 The following concession applies for mobility parking permit holders parking in spaces which have Parking Meters with a maximum parking period of 1 hour (P60):

- (a) Pay for a period of time and the vehicle can stay in the parking space for double that time. Applies for a maximum of 2 hours (120 minutes) if payment for 1 hour is made.
- 8.3 The concessions within clause 8.1 and 8.2 above also apply to all overseas official mobility cards.
- 8.4 There are no concessions for parking in:
  - (a) a designated Mobility Car Park where Time Limits apply to that Mobility Car Park;
  - (b) time zones P15, P10, P5, P3, P2;
  - (c) time zones P120 or P180;
  - (d) any area where parking is prohibited or restricted, by the Land Transport (Road User) Rule 2004 and this bylaw.
- 8.5 The following concessions apply for senior parking pass holders in areas controlled by meters (including pay and display meters)
  - (a) Pay for the first hour and the second hour is free; and
  - (b) Total time in any parking space must not exceed the maximum time restriction for the area; and
  - (c) The concessions in this clause (clause 8.5) do not apply to any parking spaces on Trafalgar Street.

## **9. CORRECT METHOD OF PARKING**

- 9.1 Every person must park a vehicle in a marked parking space so that no part of it extends beyond any line defining that space unless because of its size it must occupy more than one space, in which case parking fees must be paid in accordance with Clause 6.0 for each of those spaces that are within a metered or pay and display area.
- 9.2 Any number of motorcycles may occupy any parking space at the same time provided that no motorcycle is parked closer than a distance of 0.5 metres from any line marking the extremity of such parking space.

## **10. MISCELLANEOUS PARKING PROVISIONS**

- 10.1 Cycles shall park in designated cycle parking spaces not in parking spaces designated for motor vehicles.
- 10.2 Parking on grass verges is prohibited where signage or road markings restricts this parking.
- 10.3 No person shall park any vehicle or allow any vehicle to remain parked on any road, or on any land or any portion thereof under the control of the Council, for the principal purpose of selling that vehicle or storing that vehicle pending its sale.



## PART III - VEHICLE CONTROL

### **11. ONE WAY STREETS**

- 11.1 The Council may from time to time by resolution and defined in Schedule 1 (One Way Streets) designate any road or part thereof under the control of the Council as a road on which vehicles shall travel in one specified direction only.
- 11.2 Every driver of a vehicle must travel and park only in the direction specified by the prescribed signs on a one way road.

### **12. SKATE BOARDS, ROLLER SKATES, INLINE SKATES AND WHEELED RECREATIONAL DEVICES**

- 12.1 No person shall ride or use any skateboard, roller skates, inline skates or wheeled recreational device on any footpath in a Prohibited Area, as outlined in Schedule 2 - Prohibited Areas (Skate Boards, Roller Skates, Inline Skates and Wheeled Recreational Devices). This clause does not apply to any wheelchair, pushchair, pram, trolley, cart or mobility device or other similar device used for the purpose of the transportation of disabled or young persons.

### **13. HEAVY VEHICLES**

- 13.1 The Council may from time to time by resolution designate any road belonging to or under the Control of the Council as a road on which any specified class of traffic (including heavy vehicles) shall be prohibited or restricted by reason of its size, weight or the nature of the goods carried, and may also from time to time by resolution in like manner may remove such designation.

### **14. SHARED PATHS**

- 14.1 The Council may by resolution and defined in Schedule 3 (Shared Paths) set aside, designate or other wise reserve any land, road, carriageway or footpath as a shared path available, for the use of pedestrians, cycles, wheeled recreational devices and mobility scooters.
- 14.2 Where any land has been set aside or designated or otherwise reserved as a shared path any person using that shared path shall have full regard for other users, with pedestrians having the right of way.
- 14.3 No person shall operate any motor vehicle (including a moped) on any shared path except where a motor vehicle is driven:
- (a) into a vehicular entrance over a shared path; or
  - (b) for the purpose of maintaining any land or infrastructural or network utility, adjacent to or within the shared path; or
  - (c) where no reasonable alternative access is available and due consideration is given to periodised access for pedestrians and/or cyclists.

## **15. SHARED ZONES (ROADS)**

- 15.1 The Council may from time to time by resolution, set aside, designate or otherwise reserve any road as a Shared Zone where it is intended that the roadway is to be used by pedestrians and vehicles. The locations of these shared zones are listed in Schedule 15.
- 15.2 A driver of a vehicle travelling in the shared zone must give way to a pedestrian within a shared zone while a pedestrian within a shared zone must not unduly impede the passage of a vehicle within a shared zone.

## **16. PEDESTRIAN CROSSINGS**

- 16.1 The Council may from time to time by resolution and defined in Schedule 6 (Pedestrian Crossings) establish a pedestrian crossing on any road under the control of the Council.
- 16.2 Any such resolution shall specify the pedestrian crossing by reference to the road upon which it is to be established and the distance and direction from the closest Intersection.

## **17. SPECIAL VEHICLE LANES**

- 17.1 The Council may from time to time by resolution, restrict the use of certain roads or parts of roads to only specified classes of vehicle either at all times or only during specified times.
- 17.2 Every driver of a vehicle may only turn the vehicle into, drive or ride the vehicle on any special vehicle lane:
- (a) when the vehicle is of the class permitted by the display of signs, and as appropriate road markings; or
  - (b) when they are using the lane for a distance of not more than 50 metres for the purpose of turning into or out of a side street or property.

## PART IV - OFFENCES, PENALTIES AND EXEMPTIONS

### **18. OFFENCES**

18.1 Every person commits a breach of this bylaw who:

- (a) Knowingly permits or allows anything to be done that is a breach of this bylaw; or
- (b) Is party to, or incites to be done, anything that is a breach of this bylaw; or
- (c) Does anything or causes any condition to exist for which an authorisation or approval from the Council is required under this bylaw and operates without first obtaining that authorisation or approval.

No application for authorisation or approval from the Council, and no payment or receipt for any fee paid in connection with such application, authorisation or approval shall confer any right, authority or immunity on the person making such application or payment where that person;

- (i) Fails to comply in all respects with any condition attached to any consent, authorisation or approval; or
- (d) Fails to obey any lawful instruction of an Enforcement Officer; or
- (e) Obstructs or hinders any Enforcement Officer of the Council in the performance of his or her duties under this bylaw;
- (f) Interferes with, tampers with, removes or fixes anything to a traffic control device or parking meter.

### **19. PENALTIES FOR PARKING OFFENCES**

19.1 Every person who breaches any of the parking provisions in Part II commits an offence and is liable:

- (a) To the infringement fees as set out in Schedule 1 of the Land Transport (Offences and Penalties) Regulations 1999; or
- (b) On summary conviction to a fine not exceeding \$500.

### **20. PENALTIES FOR OTHER OFFENCES**

20.1 Every person who breaches any of Part III except Clauses 12 and 13 commits an offence and is liable on summary conviction to a fine of not exceeding \$500.

20.2 Every person who breaches the provisions of Clause 12 of this bylaw shall be liable to the confiscation of their skateboard, roller skates, inline skates or wheeled recreational device by an Enforcement Officer or Parking Warden until a fine of \$40 is paid to Council.

20.3 Every person who breaches Clause 13 or any other provision of this bylaw commits an offence and, where no other penalty is specified in another clause in this bylaw is liable on summary conviction to the penalties set out in section 242 of the Act.

## **21. ADDITIONAL PROVISIONS UNDER THE ACT**

- 21.1 Pursuant to section 162 of the Act, the Council may apply to the District Court for an injunction restraining a person from committing a breach of this bylaw.
- 21.2 The Council may remove or alter a work or thing which has been constructed in breach of this bylaw whether or not that thing is on private land in accordance with section 163 of the Act.
- 21.3 Where an infringement regime is introduced under Subpart 3 of Part 9 of the Act, any breach of this bylaw to which the infringement regime applies, is deemed to be an infringement offence.

## **22. REMOVAL OF VEHICLES**

- 22.1 Any vehicle, which is parked on any road or in any area in any manner not in conformity with, or in circumstances which contravene this bylaw or any resolutions passed hereunder, may be removed by or at the request of any Enforcement Officer, Parking Warden or duly authorised officer of the Council.
- 22.2 The Council may require payment by the owner of the vehicle of the reasonable costs of such removal
- 22.3 If such vehicle is not claimed within 14 days of its removal the Council may authorise any person to deal with that vehicle in accordance with Section 356 of the Local Government Act 1974 as if it were an abandoned vehicle.

## **23. ENFORCEMENT OFFICERS**

- 23.1 The enforcement of the provisions of this bylaw shall be carried out by officers duly appointed by the Council or by duly appointed Parking Wardens or Enforcement Officers.

## **24. EXEMPTIONS**

- 24.1 The driver or person in charge of any of the following vehicles shall be exempt from the provisions of this bylaw:
  - (a) A vehicle used as an ambulance and being at the time used on urgent ambulance service.
  - (b) A Fire Service vehicle at the time engaged in attending at any emergency.
  - (c) A vehicle used by a Police Officer acting in the course of their duties.
  - (d) A vehicle being used in the emergency repair of any public or network utility.
  - (e) The driver or person in charge of any vehicle which has a parking permit or other authority from Council to park in a parking space.

THE COMMON SEAL of the  
NELSON CITY COUNCIL  
was hereto affixed in  
the presence of: }

..... His Worship the Mayor

..... Chief Executive

## Index of Schedules

Council has a database which lists the different traffic restrictions within the City. This database is accessible at <http://applications/TrafficRestrictions/ViewApps.aspx>.

Below are screenshots (as of May 2011) from this database which show the location of the different traffic restrictions for the following schedules. Some traffic restrictions have not been individually listed below because of the number of listings.

Reference should be made directly to the database for an accurate record of the location of the areas identified in the schedules.

Contact Council for the location of shared paths (on Councils RAMM database).

Schedule 1 – One Way Streets

Schedule 2 – Prohibited Areas (Skate Boards Roller Skates, Inline Skates and Wheeled Recreational Devices)

Schedule 3 – Shared Paths

Schedule 4 – Special Parking Areas

- Authorised Vehicles Only
- Bicycle Park
- Bus Stop
- Car Pooling Spaces
- Loading Zone
- Loading Zone/Taxi Stand
- Mobility Park
- Mobility Park Metered Carpark P60
- Motorcycle Park
- Parking Permit
- Taxi Stand

Schedule 5 – Metered Parking including pay and display

- Metered Car Parking
- Metered Car Parking – all day
- Metered Car park P60
- Metered Car park P120
- Metered Car park P180
- Metered Car park P240
- P120 metered single

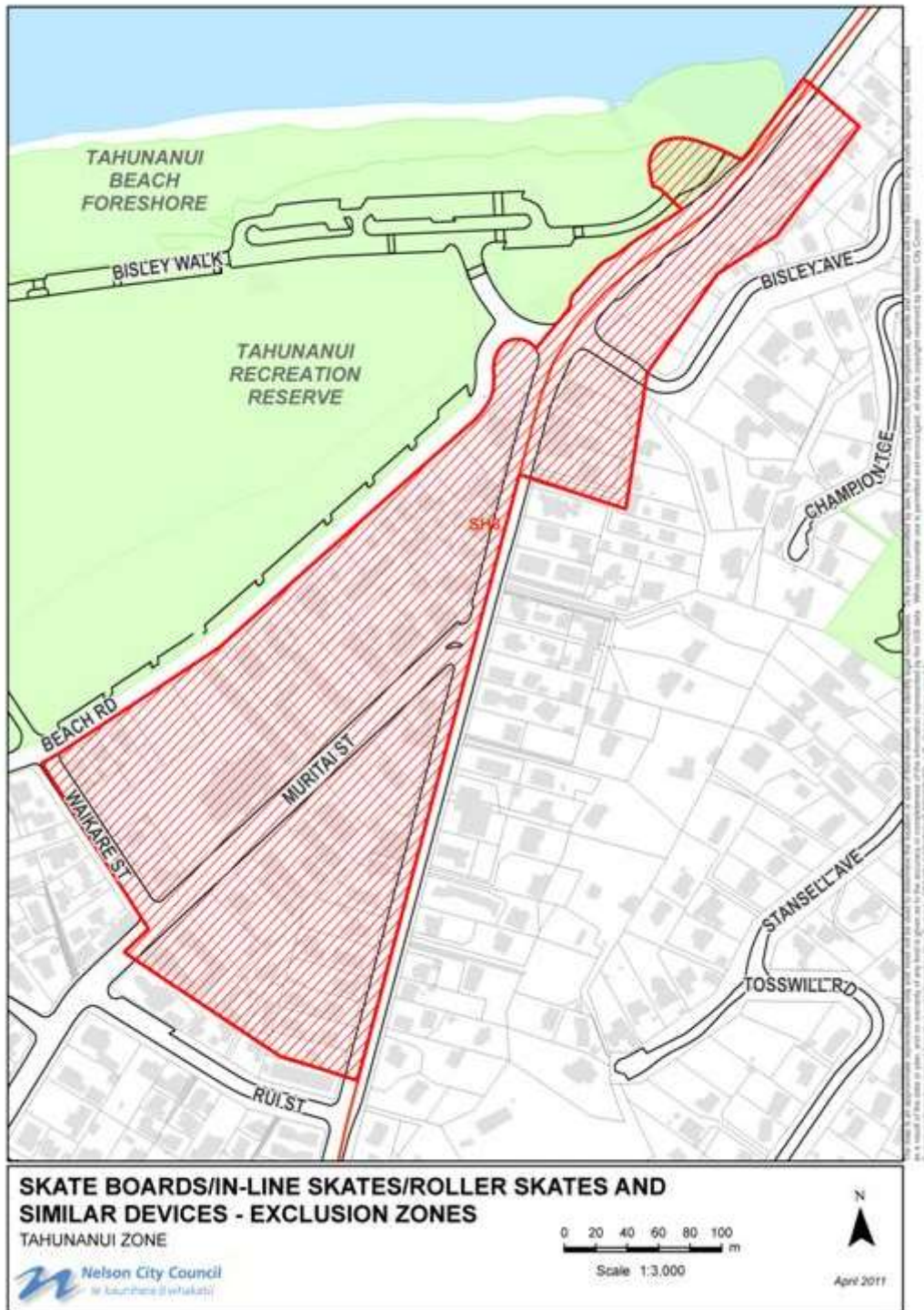
- Schedule 6 – Pedestrian Crossings
- Schedule 7 – Resident Parking Spaces
- Schedule 8 – Time Limited Parking Areas
  - P2
  - P5
  - P10
  - P15
  - P30
  - P60
  - P120
  - P180
- Schedule 9 – No Stopping and No Parking Areas
- Schedule 10 – Restricted Parking Areas
- Schedule 11 – Method of Payment and Prescribed Fees and Charges
- Schedule 12 – Times of operation of parking meters and pay and display areas
- Schedule 13 – Stop Signs
- Schedule 14 – Give Way Signs
- Schedule 15 – Shared Zones (Roads)

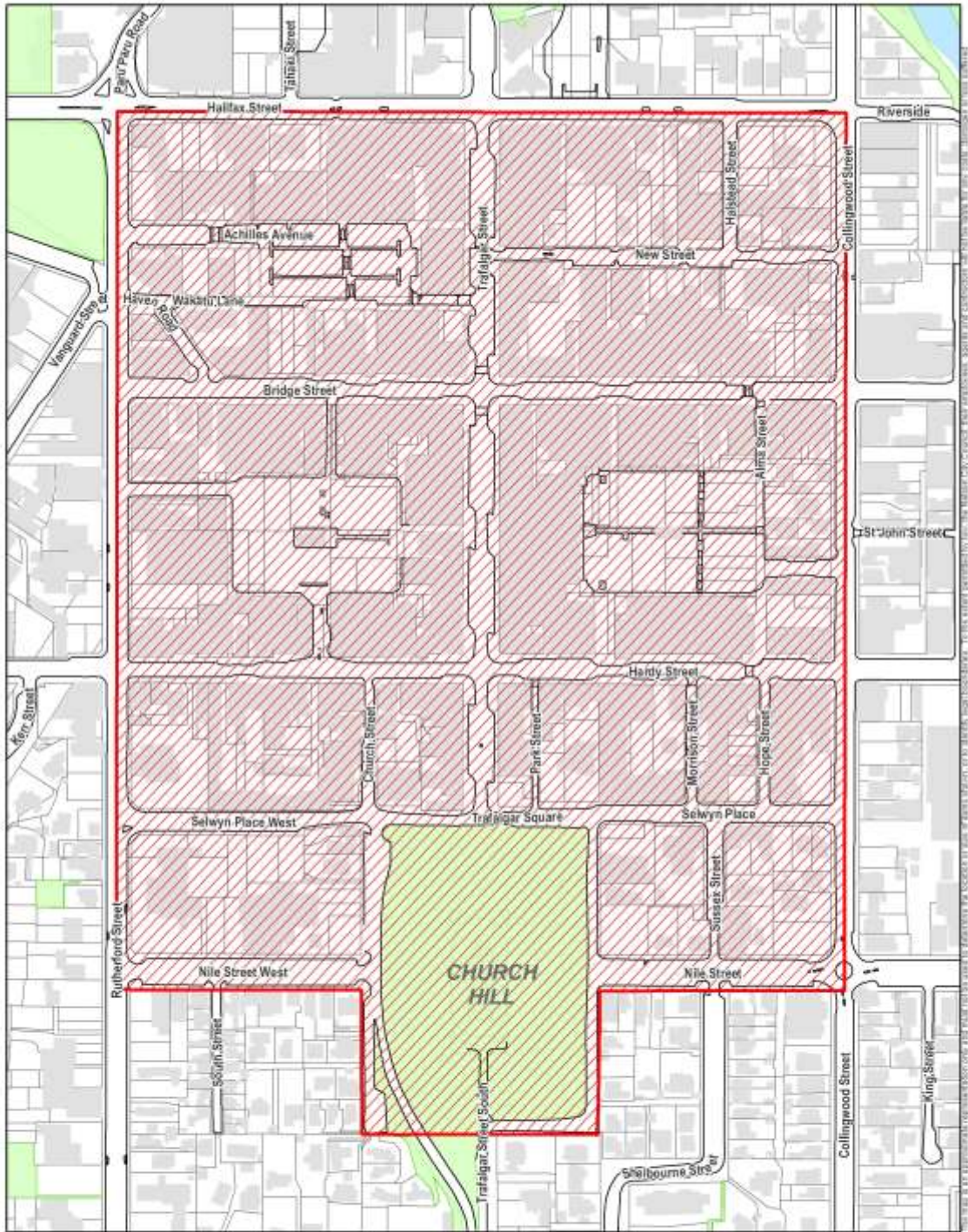
## Schedule 1 - One Way Streets

Results – One Way Streets								
ID	Street	Start Location	Side	Direction	Start Point	Distance	Type	Status
2105	Tahaki St	Halifax / Tahaki	North	North	0	101.0	One way street	Completed
1142	Blick Tce	N/A	North	West	0	76.0	One way street	Completed
515	Avon Tce	N/A	North	North	0	251.0	One way street	Completed
449	Westbrook Tce	Westbrook/ Brook	North	North	0	1025.0	One way street	Completed
228	Seymour Ave	Brook/ Seymour	North	East	0	13.0	One way street	Completed
13	Brook St	N/A	North	South	0	1025.0	One way street	Completed
12	Church St	N/A	North	South	0	48.0	One way street	Completed
11	Kerr St	Hardy / Kerr	North	South	0	156.0	One way street	Completed
10	Torlesse St	Torlesse / Waterhouse	North	South	230.0	324.0	One way street	Completed



**Schedule 2 - Prohibited Areas  
(Skate Boards, Roller Skates, Inline Skates and Wheeled  
Recreational Devices)**



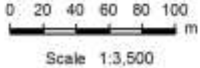


This map is a general representation of the information used to determine the location of the exclusion zones. It is not intended to be used as a legal document. The information is provided for general information only. The information is not intended to be used as a legal document. The information is not intended to be used as a legal document. The information is not intended to be used as a legal document.

**SKATE BOARDS/IN-LINE SKATES/ROLLER SKATES AND SIMILAR DEVICES - EXCLUSION ZONES**

**INNER CITY ZONE**

**Nelson City Council**  
 te kaunihera o whakatū  
 PO Box 645 Nelson 7040 New Zealand  
 PH 03 5462200 FAX 03 5462299  
 www.nelsoncitycouncil.co.nz



November 2012



**SKATE BOARDS/IN-LINE SKATES/ROLLER SKATES AND SIMILAR DEVICES - EXCLUSION ZONES**  
**STOKE ZONE**

Nelson City Council  
 te kaitiaki / whakaiti

0 25 50 75 100 m  
 Scale 1:3,000

N  
 Apr 2011



**SKATE BOARDS/IN-LINE SKATES/ROLLER SKATES AND  
SIMILAR DEVICES - EXCLUSION ZONES**

VICTORY SQUARE ZONE



April 2011

### **Schedule 3 - Shared Paths**

Contact Council for location of shared paths (on Councils RAMM database)

## Schedule 4 - Special Parking Areas

### Authorised Vehicles Only

Results - Authorised Vehicles Only								
ID	Street	Start Location	Side	Direction	Start Point	Distance	Type	Status
517	Tahunanui Dr	Parkers/ Tahunanui	West	North	1302.0	6.0	Authorised Vehicles only	Completed

### Bicycle Park

Results - Bicycle Park								
ID	Street	Start Location	Side	Direction	Start Point	Distance	Type	Status
1105	Nile St	Nile/Alton	North	West	5.8	3.7	Bicycle Park	Completed
1101	Nile St	Nile/Alton	North	West	5.6	3.6	Bicycle Park	Completed
1097	Halifax St	Halstead/ Halifax	North	West	45.9	3.4	Bicycle Park	Completed
533	Bridge St	Collingwood /Bridge	North	West	113.3	4.8	Bicycle Park	Completed
531	Hardy St	Montgomery Access/ Hardy	North	West	85.7	6.4	Bicycle Park	Completed
529	Strawbridge Sq	Neale/ Neale Ave Access Rd	West	North	272.4	2.6	Bicycle Park	Completed
527	Strawbridge Sq	Neale/ Neale Ave Access Rd	South	West	199.3	3.2	Bicycle Park	Completed
525	Montgomery Sq	Rutherford/ Rutherford St Access Rd to C.P.	North	East	174.0	5.0	Bicycle Park	Completed
523	Buxton Sq	Alma/ Bridge	North	East	514.5	16.8	Bicycle Park	Completed
521	Buxton Sq	Alma/ Bridge	West	North	403.0	5.4	Bicycle Park	Completed
519	Tahaki St	Tahaki/East bdy of Library	North	N/A	21.3	3.3	Bicycle Park	Completed
518	Tahaki St	Tahaki/East bdy of Library	North	N/A	11.2	4.1	Bicycle Park	Completed
272	Putaitai St	Neale/ Putaitai	North	East	40.4	5.2	Bicycle Park	Completed
271	Nile St	Nile/ Collingwood	South	East	29.9	6.0	Bicycle Park	Completed

## Bus Stop

Refer <http://applications/TrafficRestrictions/ViewApps.aspx>.

## Car Pooling Spaces

Results – Car Pooling Spaces								
ID	Street	Start Location	Side	Direction	Start Point	Distance	Type	Status
2245	Harley St	Bridge/ Hardy	East	South	53.2	16.0	Car Pooling spaces	Completed
2244	Kerr St	Hardy/Kerr	East	South	31.0	58.0	Car Pooling spaces	Completed
2243	Haven Rd	Rutherford/ Haven	North	West	9.0	31.0	Car Pooling spaces	Completed
	Wakatu Square						Car Pooling spaces (note these are pay and display on Saturdays)	

## Loading Zones

Results – Loading Zones									
ID	Street	Start Location	Side	Direction	Start Point	Distance	Type	Status	
3905	New St	Trafalgar Street Intersection	Left	East	20.0	9.5	Loading Zone	Completed	
3846	Montgomery Sq	Hardy Street Intersection	Right	North	70.0	8.0	Loading Zone	Completed	
2159	Neale Ave	Strawbridge Car Park/ Neale Av	East	South	6.0	23.0	Loading Zone	Completed	
1234	Bridge St	Trafalgar/ Bridge	North	West	111.6	6.0	Loading Zone	Completed	
1228	Hardy St	Morrison/ Hardy	South	West	63.0	9.8	Loading Zone	Completed	
1222	Rutherford St	Nile (centre)/ Rutherford	East	South	21.8	14.0	Loading Zone	Completed	
1216	Akersten St	Akersten/ Marina Access	East	North	144.0	21.8	Loading Zone	Deleted	For Deletion
1210	Wakatu Lane	Achillies/ Rutherford	East	North	205.4	7.6	Loading Zone	Completed	
1205	Strawbridge Sq	Neale/ Neale Ave Access Rd	West	North	276.0	16.2	Loading Zone	Completed	
1200	Montgomery Sq	Rutherford/ Rutherford St Access Rd to C.P.	West	North	536.0	9.5	Loading Zone	Completed	

<b>Results – Loading Zones</b>									
<b>ID</b>	<b>Street</b>	<b>Start Location</b>	<b>Side</b>	<b>Direction</b>	<b>Start Point</b>	<b>Distance</b>	<b>Type</b>	<b>Status</b>	
1193	Montgomery Sq	Rutherford/ Rutherford St Access Rd to C.P.	South	West	434.5	25.5	Loading Zone	Deleted	For Deletion
1189	Montgomery Sq	Rutherford/ Rutherford St Access Rd to C.P.	East	South	305.6	18.4	Loading Zone	Deleted	For Deletion
1185	Montgomery Sq	Rutherford/ Rutherford St Access Rd to C.P.	North	East	77.3	16.7	Loading Zone	Completed	
1182	Buxton Sq	Alma/ Bridge	North	East	489.5	12.0	Loading Zone	Completed	
1152	Wakefield Quay	Richardson/ Rocks	West	North	617.0	6.0	Loading Zone	Completed	
1150	Parere St	Vanguard/ Parere	North	West	38.0	6.0	Loading Zone	Completed	
1147	Nile St	Nile/King	South	West	24.7	7.7	Loading Zone	Completed	
1145	Nile St	Nile/ Collingwood	South	West	19.3	10.6	Loading Zone	Completed	
842	Gloucester St	Vanguard/ Gloucester	West	South	15.6	5.5	Loading Zone	Completed	
829	Rutherford St	Halifax/ Rutherford	East	South	628.3	14.0	Loading Zone	Completed	
768	Vanguard St	Gloucester/ Vanguard	West	South	21.1	10.0	Loading Zone	Completed	
506	Alton St	Alton/Nile	West	Nortj	46.7	14.9	Loading Zone	Completed	
503	Morrison St	Selwyn/ Morrison	West	North	46.7	14.9	Loading Zone	Completed	
265	Weka St	Weka/ Tasman	North	East	54.8	13.0	Loading Zone	Completed	
264	Weka St	Weka/ Tasman	South	East	52.0	14.6	Loading Zone	Completed	
263	New St	Trafalgar St/ New	North	East	145.8	10.0	Loading Zone	Completed	
261	New St	Trafalgar St/ New	South	East	192.3	16.7	Loading Zone	Completed	

### **Loading Zone/Taxi Stand**

<b>Results – Loading Zone / Taxi Stand</b>								
<b>ID</b>	<b>Street</b>	<b>Start Location</b>	<b>Side</b>	<b>Direction</b>	<b>Start Point</b>	<b>Distance</b>	<b>Type</b>	<b>Status</b>
1239	Buxton Sq	Alma/ Bridge	West	North	423.2	8.5	Loading Zone/Taxi Stand	Completed



## Mobility Park

Results – Mobility Park								
ID	Street	Start Location	Side	Direction	Start Point	Distance	Type	Status
4031	The Ridgeway	Baigent Road Intersection	Left	North	120.0	5.0	Mobility Park	Completed
3971	Ngaire Pl	River Terrace	West	South	3.0	6.0	Mobility Park	Completed
3970	Bridge St	Ngaire Lane	South	West	2.0	5.0	Mobility Park	Completed
3957	Akersten St	Marina car park, Stop control limit line (3952)	Left	North	185.0	4.0	Mobility Park	Completed
3955	Akersten St	Marina car park, Stop control limit line (3952)	Both	North	160.0	4.0	Mobility Park	Completed
3954	Akersten St	Marina car park, Stop control limit line (3952)	Both	North	129.0	4.0	Mobility Park	Completed
3953	Akersten St	Marina car park, Stop control limit line (3952)	Both	North	68.0	4.0	Mobility Park	Completed
3863	Strawbridge Sq	Neale Ave access Rd (Sq end)	South	West	24.0	3.5	Mobility Park	Completed
3854	Buxton sq	Alma St (Hardy St section)	Right	West	48.0	7.5	Mobility Park	Completed
2446	Bridge St	Ngaire Lane	Right	N/A	81.0	12.0	Mobility Park	Completed
2442	Saxton Field	Kerb cut down at cricket car park entrance	Right	N/A	160.0	8.0	Mobility Park	Completed
2435	Saxton Field	Netball car park	N/A	N/A		8.0	Mobility Park	Completed
2431	Saxton Field	Saxton Rd Suffolk Rd Int.	Left	N/A	345.0	8.0	Mobility Park	Completed
2304	Trafalgar St	Grove St	East	South	40.0	5.0	Mobility Park	Completed

<b>Results – Mobility Park</b>								
<b>ID</b>	<b>Street</b>	<b>Start Location</b>	<b>Side</b>	<b>Direction</b>	<b>Start Point</b>	<b>Distance</b>	<b>Type</b>	<b>Status</b>
2297	Trafalgar St	Halifax St	West	South	19.2	4.0	Mobility Park	Completed
2284	Ajax Ave	Collingwood Street Intersection	South	West	140.0	5.0	Mobility Park	Completed
331	Tipahi St	Tukuka/ Tipahi	West	North	28.0	6.0	Mobility Park	Completed
329	Halstead St	Halstead/ Halifax	West	South	6.0	7.0	Mobility Park	Completed
327	Neale Park	Neale Park Access Rd/ North Rd	South	West	82.0	6.5	Mobility Park	Completed
325	Saxton Rd	South/ Western cnr courts	East	South	158.0	7.3	Mobility Park	Completed
323	Wakatu Lane	Achillies/ Rutherford	North	East	192.6	3.5	Mobility Park	Completed
321	Wakatu Lane	Achillies/ Rutherford	North	East	139.0	10.0	Mobility Park	Completed
319	Montgomery Sq	Rutherford/ Rutherford St Access Rd to C.P.	East	South	343.3	10.5	Mobility Park	Completed
317	Montgomery Sq	Rutherford/ Rutherford St Access Rd to C.P.	North	East	101.5	10.0	Mobility Park	Completed
315	Buxton Sq	Alma/ Bridge	West	North	443.0	14.3	Mobility Park	Completed
313	Buxton Sq	Alma/ Bridge	South	West	306.6	5.0	Mobility Park	Completed
311	Tahaki St	Tahaki/East bdy of Library	North	N/A	192.4	5.7	Mobility Park	Completed
310	Tahaki St	Tahaki/East bdy of Library	North	N/A	48.2	3.0	Mobility Park	Completed
309	Tahaki St	Tahaki/East bdy of Library	North	N/A	0	3.7	Mobility Park	Completed
307	Ngawhatu Rd	Ngawathu/ Suffolk	East	South	131.0	3.0	Mobility Park	Completed
306	Main Rd Stoke	Songer/Main Road	West	North	34.4	10.0	Mobility Park	Completed
281	New St	Trafalgar/ New	North	East	137.7	8.1	Mobility Park	Completed
280	Riverside	Riverside/ Collingwood	South	East	209.0	3.7	Mobility Park	Completed
107	Strawbridge Sq	Neale/ Neale Ave Access Rd	West	North	377.0	5.7	Mobility Park	Completed

**Results – Mobility Park**

ID	Street	Start Location	Side	Direction	Start Point	Distance	Type	Status
106	Neale Ave	Neale/ library entrance way (K&C)	East	South	15.8	4.2	Mobility Park	Completed
104	Strawbridge Sq	Neale/ Neale Ave Access Rd	South	West	206.0	7.0	Mobility Park	Completed

**Mobility Park Metered Carpark P60****Results - Mobility Park Metered Carpark P60**

ID	Street	Start Location	Side	Direction	Start Point	Distance	Type	Status
4005	Buxton sq	Collingwood St Intersection	Left	West	222.0	7.0	Mobility Park Metered Carpark – P60	Rejected
2296	Achilles Ave	Rutherford Street	North	East	193.0	4.0	Mobility Park Metered Carpark – P60	Completed
2294	Achilles Ave	Rutherford Street	North	East	138.0	11.0	Mobility Park Metered Carpark – P60	Completed

**Motorcycle Park****Results – Motorcycle Park**

ID	Street	Start Location	Side	Direction	Start Point	Distance	Type	Status	
3853	Montgomery Sq	Rutherford St	South	East	77.0	5.0	Motorcycle Park	Completed	
3847	Montgomery Sq	Hardy Street Intersection	Right	North	54.0	17.0	Motorcycle Park	Completed	
2119	Hardy St	Trafalgar/ Hardy	North	East	98.9	3.9	Motorcycle Park	Completed	
2117	Hardy St	Trafalgar/ Hardy	North	East	67.9	3.6	Motorcycle Park	Completed	
1137	Bridge St	Trafalgar/ Bridge	South	South	224.9	4.4	Motorcycle Park	Deleted	For Deletion
1134	Bridge St	Trafalgar/ Bridge	South	East	73.1	3.3	Motorcycle Park	Completed	
1131	Bridge St	Rutherford/	South	East	215.7	4.2	Motorcycle	Completed	

<b>Results – Motorcycle Park</b>									
<b>ID</b>	<b>Street</b>	<b>Start Location</b>	<b>Side</b>	<b>Direction</b>	<b>Start Point</b>	<b>Distance</b>	<b>Type</b>	<b>Status</b>	
		Bridge					Park		
1128	Bridge St	Rutherford/ Bridge	South	East	178.1	3.5	Motorcycle Park	Completed	
1126	Hardy st	Trafalgar/ Hardy	North	East	134.1	4.0	Motorcycle Park	Completed	
1121	Church St	Church/ Bridge	East	South	6.0	3.0	Motorcycle Park	Completed	
1118	Saxton Rd	South/ Western cnr courts	North	East	46.2	6.5	Motorcycle Park	Completed	
1115	Wakatu Lane	Achilles/ Rutherford	South	West	370.0	3.0	Motorcycle Park	Completed	
1112	Wakatu Lane	Achilles/ Rutherford	South	West	360.0	4.0	Motorcycle Park	Completed	
1109	Montgomery Sq	South East corner of toilet block	East	North	66.0	3.8	Motorcycle Park	Completed	
1106	Buxton Sq	South East corner of toilet block	North	East	33.3	23.4	Motorcycle Park	Completed	
1102	Halifax St	Trafalgar St	South	West	57.0	3.3	Motorcycle Park	Completed	
1098	Tahaki St	Tahaki/East bdy of Library	North	N/A	5.6	3.6	Motorcycle Park	Completed	
641	Nayland Rd	Exeter/ Nayland	West	South	100.1	10.0	Motorcycle Park	Completed	
624	Kerr St	Hardy/ Kerr	West	South	10.0	4.0	Motorcycle Park	Completed	
618	Nayland Rd	Exeter/ Nayland	West	South	177.1	7.7	Motorcycle Park	Completed	

## Parking Permit

<b>Results – Parking Permit</b>									
<b>ID</b>	<b>Street</b>	<b>Start Location</b>	<b>Side</b>	<b>Direction</b>	<b>Start Point</b>	<b>Distance</b>	<b>Type</b>	<b>Status</b>	
3735	South St	Existing Residents Only Parking Zone	N/A	N/A	0	0	Parking Permit	Completed	
27	Trafalgar Sq	N/A	North	North	0	0	Parking Permit	Completed	

## Taxi Stand

<b>Results – Taxi Stand</b>									
<b>ID</b>	<b>Street</b>	<b>Start Location</b>	<b>Side</b>	<b>Direction</b>	<b>Start Point</b>	<b>Distance</b>	<b>Type</b>	<b>Status</b>	

<b>Results – Taxi Stand</b>									
<b>ID</b>	<b>Street</b>	<b>Start Location</b>	<b>Side</b>	<b>Direction</b>	<b>Start Point</b>	<b>Distance</b>	<b>Type</b>	<b>Status</b>	
3820	Trafalgar St	Halifax Street Intersection	Right	North	20.0	11.0	Taxi Stand	Completed	
3819	Bridge St	Collingwood Street Intersection	Left	East	13.0	11.0	Taxi Stand	Completed	
3818	Bridge St	Trafalgar Street Intersection	Left	East	65.0	9.0	Taxi Stand	Completed	
3817	Bridge St	Montgomery Sq entrance	Left	West	0	6.0	Taxi Stand	Completed	
3816	Montgomery sq	Montgomery Sq entry Rd/ Montgomery Sq	Right	East	51.0	6.0	Taxi Stand	Completed	
3815	Buxton Sq	Old Bank Lane	Left	North	44.0	8.0	Taxi Stand	Completed	
3814	Hardy St	Church Street Intersection	Left	West	104.0	6.0	Taxi Stand	Completed	
3813	Hardy St	Morrison Street Intersection	Left	West	73.0	6.0	Taxi Stand	Completed	
3812	Hardy St	Morrison Street Intersection	Left	West	8.0	6.0	Taxi Stand	Completed	
3811	Selwyn Pl	Collingwood Street int	Left	East	109.0	11.0	Taxi Stand	Completed	
1111	Bridge St	Collingwood/ Bridge	North	West	169.0	16.2	Taxi Stand	Deleted	For Deletion
1108	Bridge St	Trafalgar/ Bridge	South	South	199.8	6.0	Taxi Stand	Completed	
1104	Hardy St	Morrison/ Hardy	South	West	108.8	5.5	Taxi Stand	Completed	
1100	Hardy St	Morrison/ Hardy	South	West	73.2	11.8	Taxi Stand	Deleted	For Deletion
1096	Montgomery Sq	Rutherford/ Rutherford St Access Rd to C.P.	East	South	354.3	12.3	Taxi Stand	Deleted	For Deletion
284	Halifax St	Tahaki/ Halifax	North	East	7.3	6.1	Taxi Stand	Deleted	For Deletion

## Schedule 5 – Metered Parking including pay and display

### Metered Car Parking

Results – Metered Car Parking								
ID	Street	Start Location	Side	Direction	Start Point	Distance	Type	Status
103	Wakatu Lane	Achillies/ Rutherford	North	East	6.8	0	Metered Parking	Completed
102	Montgomery Sq	Rutherford/ Rutherford St Access Rd to C.P.	North	East	111.5	20.0	Metered Parking	Completed

### Metered Car Parking – All Day

Results – Metered Car Parking – All Day									
ID	Street	Start Location	Side	Direction	Start Point	Distance	Type	Status	
2293	Achilles Ave	Rutherford Street	North	East	75.0	63.0	Metered Parking All Day	Completed	
2292	Achilles Ave	Rutherford Street	North	East	8.0	30.0	Metered Parking All Day	Completed	
2291	Achilles Ave	Rutherford Street	South	East	83.0	12.0	Metered Parking All Day	Completed	
2290	Achilles Ave	Rutherford Street	South	East	8.0	37.0	Metered Parking All Day	Completed	
2268	Wakatu Lane	Entire Carpark	N/A	N/A	0	0	Metered Parking All Day	Deleted	For Deletion

## Metered Carpark P60

Results – Metered Carpark P60								
ID	Street	Start Location	Side	Direction	Start Point	Distance	Type	Status
2295	Achilles Ave	Rutherford Street	North	East	155.0	38.0	Metered Carpark – P60	Completed
2238	Achilles Ave	Rutherford Street	North	East	138.0	57.0	Metered Carpark – P60	Completed
101	Trafalgar St	Bridge/ Trafalgar	West	South	108.2	55.5	Metered Carpark – P60	Completed
99	Trafalgar St	Bridge/ Trafalgar	West	South	22.0	57.8	Metered Carpark – P60	Completed
97	Trafalgar St	Wakatu/ Trafalgar	West	South	6.5	11.1	Metered Carpark – P60	Completed
96	Trafalgar St	Halifax/ Trafalgar	West	South	89.0	24.3	Metered Carpark – P60	Completed
95	Trafalgar St	Halifax/ Trafalgar	West	South	31.2	48.8	Metered Carpark – P60	Completed
94	Trafalgar St	Bridge (Centreline)/ Trafalgar	East	South	115.3	55.5	Metered Carpark – P60	Completed
93	Trafalgar St	Bridge (Centreline)/ Trafalgar	East	South	65.6	21.2	Metered Carpark – P60	Completed
92	Trafalgar St	Bridge (Centreline)/ Trafalgar	East	South	28.7	34.8	Metered Carpark – P60	Completed
90	Trafalgar St	Halifax/ Trafalgar	East	South	137.7	28.0	Metered Carpark – P60	Completed
89	Trafalgar St	Halifax/ Trafalgar	East	South	110.5	25.0	Metered Carpark – P60	Completed
87	Trafalgar St	Halifax/ Trafalgar	East	South	64.5	18.6	Metered Carpark – P60	Completed
85	Trafalgar St	Halifax/ Trafalgar	East	South	33.0	29.8	Metered Carpark – P60	Completed
35	Trafalgar St	N/A	West	North	0	0	Metered Carpark – P60	Completed
30	Trafalgar St	N/A	East	North	0	0	Metered Carpark – P60	Completed

## Metered Carpark P120

Refer <http://applications/TrafficRestrictions/ViewApps.aspx>.

## Metered Carpark P180

Results - Metered Carpark P180									
ID	Street	Start Location	Side	Direction	Start Point	Distance	Type	Status	
2299	Buxton Sq	All entrances	N/A	N/A			Metered Carpark - P180	Completed	
2298	Montgomery Sq	All entrances	N/A	N/A			Metered Carpark - P180 except for No Parking times as identified in Schedule 9	Completed	
2267	Trafalgar St	Entire carpark	N/A	N/A	0	0	Metered Carpark - P180	Deleted	For Deletion
2263	Buxton Sq	Entire carpark	N/A	N/A	0	0	Metered Carpark - P180	Deleted	For Deletion
2262	Montgomery Sq	Entire carpark	N/A	N/A	0	0	Metered Carpark - P180	Deleted	For Deletion
32	Trafalgar St	N/A	North	North	0	0	Metered Carpark - P180	Deleted	For Deletion

## Metered Carpark P240

Results - Metered Carpark P240									
ID	Street	Start Location	Side	Direction	Start Point	Distance	Type	Status	
44	Montgomery Sq	N/A	North	North	0	0	Metered Carpark - P240	Deleted	For Deletion
42	Buxton Sq	N/A	North	North	0	0	Metered Carpark - P240	Deleted	For Deletion
28	Wakatu Lane	N/A	North	North	0	0	Metered Carpark - P240	Deleted	For Deletion



## P120 Metered Single

<b>Results – 120 Metered Single</b>									
<b>ID</b>	<b>Street</b>	<b>Start Location</b>	<b>Side</b>	<b>Direction</b>	<b>Start Point</b>	<b>Distance</b>	<b>Type</b>	<b>Status</b>	
2249	New St	Trafalgar Street to Collingwood	Both	East	0	0	P120 Metered Single	Deleted	For Deletion
2248	Haven Rd	Wakatu Lane To Bridge Street	Both	South	0	0	P120 Metered Single	Deleted	For Deletion
1190	Hardy St	Montgomery Access/ Hardy	North	West	69.0	11.4	P120 Metered Single	Completed	
1186	Hardy St	Church/ Hardy	South	West	103.2	12.4	P120 Metered Single	Completed	

## Schedule 6 – Pedestrian Crossing

Results – Pedestrian Crossing								
ID	Street	Start Location	Side	Direction	Start Point	Distance	Type	Status
2113	Hardy St	Trafalgar/ Hardy	North	East	7.3	3.0	Pedestrian Crossing	Completed
1301	Bridge St	Trafalgar/ Bridge	South	South	8.2	3.0	Pedestrian Crossing	Completed
1296	Hardy St	Trafalgar/ Hardy	North	West	7.4	3.0	Pedestrian Crossing	Completed
1291	Hardy St	Trafalgar/ Hardy	South	West	8.8	3.0	Pedestrian Crossing	Completed
1286	Selwyn Pl	Trafalgar Sq (West)/ Selwyn	South	West	166.2	3.0	Pedestrian Crossing	Completed
1281	Selwyn Pl	Trafalgar/ Selwyn	North	East	8.7	3.0	Pedestrian Crossing	Completed
1276	Selwyn Pl	Church/ Selwyn	North	East	60.5	3.0	Pedestrian Crossing	Completed
1271	Selwyn Pl	Rutherford/ Selwyn	North	East	161.4	3.0	Pedestrian Crossing	Completed
1266	Rutherford St	Halifax/ Rutherford	West	South	8.5	2.0	Pedestrian Crossing	Completed
1261	Tahunanui Dr	Parkers/ Tahunanui	North	North	700.0	2.0	Pedestrian Crossing	Completed
1256	Tahunanui Dr	Tahunanui/ Parkers	West	North	1197.0	2.0	Pedestrian Crossing	Completed
1250	Main Rd Stoke	Tainui/Main Rd	West	South	137.0	2.0	Pedestrian Crossing	Completed
1244	Muritai St	Muritai / Green (centreline)	North	North	223.0	2.0	Pedestrian Crossing	Completed
1141	Vanguard St	Between Totara/ Franklyn by school	East	West	0	0	Pedestrian Crossing	Completed
1139	Paru Paru Rd	Corner Paru Paru/ Rutherford by Anzac Park	East	West	0	0	Pedestrian Crossing	Completed
1136	Paru Paru Rd	Corner Paru Paru/ Halifax by Woolworths	East	West	0	0	Pedestrian Crossing	Completed
1133	Paru Paru Rd	Corner Paru Paru/ Halifax by First National	East	West	0	0	Pedestrian Crossing	Completed
1070	Nayland Rd	Outside Nayland Primary School	East	West	0	0	Pedestrian Crossing	Completed

1057	Vanguard St	Corner Vanguard/ Franklyn	East	West	0	0	Pedestrian Crossing	Completed
1056	Rutherford St	Outside Nelson College for Girls	East	West	0	0	Pedestrian Crossing	Completed
1055	Haven Rd	Between Auckland Point School and Trafalgar Centre	East	West	0	0	Pedestrian Crossing	Completed
844	Songer St	Corner Songer/ Main Road Stoke	North	South	0	0	Pedestrian Crossing	Completed
832	Bridge St	Corner Bridge/ Trafalgar near Westpac	North	West	7.2	3.0	Pedestrian Crossing	Completed
20	Nile St	Outside Central School	North	South	0	0	Pedestrian Crossing	Completed
17	Main Rd Stoke	Outside Stoke School	North	South	0	0	Pedestrian Crossing	Completed

## Schedule 7 – Resident Parking Spaces

Results – Resident Parking Spaces								
ID	Street	Start Location	Side	Direction	Start Point	Distance	Type	Status
3997	Waimea Rd	1/72 Waimea Rd	N/A	N/A	0	0	Resident Only Park	Rejected
3849	Queens Rd	Russel Street Junction	South	West	52.0	5.0	Resident Only Park	Completed
3799	Wakefield Quay	Collins Street/ Haven Road	Left	East	690.0	6.0	Resident Only Park	Completed
2445	Allan St	Ronaki Terrace	Left	N/A	125.0	6.0	Resident Only Park	Completed
2408	Nile St	Rutherford/ Nile Int	Left	East	77.5	2.5	Resident Only Park	Completed
2407	Nile St	For no/12	N/A	N/A	0	0	Resident Only Park	Completed
2302	Collingwood St	Manuka Street Intersection	West	South	18.0	5.0	Resident Only Park	Completed
2237	Collingwood St	Elliot St / Collingwood St	West	South	24.0	12.0	Resident Only Park	Completed
2236	Elliot St	Trafalgar St / Elliot St	South	East	36.0	6.0	Resident Only Park	Completed
2235	Nile St	Rutherford St / Elliot St	North	East	75.0	2.6	Resident Only Park	Completed
2234	Nile St	Trafalgar Sq/ Nile St East	South	East	34.0	2.9	Resident Only Park	Completed
2233	Nile St	Trafalgar Sq/ Nile St East	South	East	34.0	2.9	Resident Only Park	Completed
2232	Hardy St	Alton St/ Hardy St	South	East	30.0	6.0	Resident Only Park	Completed
2231	South St	Nile Street/ South Street	North	South	0	105.0	Resident Only Park	Completed
890	Wakefield Quay	Collins Street/ Haven Rd	East	South	708.0	8.0	Resident Only Park	Completed
887	Wakefield Quay	Collins Street/ Haven Rd	East	South	870.0	5.0	Resident Only Park	Completed
884	Alton St	Alton/ Nile	East	South	89.3	5.7	Resident Only Park	Completed
879	Collingwood St	Collingwood/ Nile	East	South	42.1	5.3	Resident Only Park	Completed

## Schedule 8 – Time Limited Parking Areas

### P2

Results – P2								
ID	Street	Start Location	Side	Direction	Start Point	Distance	Type	Status
4020	Manuka St	Collingwood Street Intersection	Right	East	82.0	34.0	P2	Completed
898	Vanguard St	Motueka/ Vanguard	West	North	288.0	14.0	P2	Completed
896	Vanguard St	Motueka/ Vanguard	West	North	267.0	14.0	P2	Completed
894	Nayland Rd	Nayland/Norwich	East	West	16.8	27.0	P2	Completed
893	Vanguard St	Totara/ Vanguard	West	South	116.4	12.7	P2	Completed
892	The Ridgeway	Baigents/ The Ridgeway	West	South	92.0	12.0	P2	Completed
891	Alton St	Alton/ Nile	West	South	10.6	76.9	P2	Completed
278	Manuka St	Manuka/ Collingwood	South	East	179.0	24.0	P2	Completed

### P5

Results – P5								
ID	Street	Start Location	Side	Direction	Start Point	Distance	Type	Status
4034	Haven Rd	Vanguard St Intersection	Right	West	70.0	7.0	P5	Completed
3990	Strawbridge Sq	South end Putaitai Street entrance road	North	South	4.0	5.0	P5	Completed
3986	Putaitai Street	Main Road Stoke	Left	West	0	18.0	P5	Completed
3845	Montgomery Sq	Hardy Street Intersection	Right	North	6.0	19.0	P5	Completed
3822	Buxton Sq	Old Bank Lane Intersection	Left	West	0	18.0	P5	Completed
3821	Hardy St	Trafalgar Street Intersection	Left	East	56.0	12.0	P5	Completed
2285	Vickerman St	Wildman Ave	North	East	23.0	5.0	P5	Completed
1232	Trafalgar St	Halifax/ Trafalgar	West	South	19.2	12.0	P5	Completed
1226	Trafalgar St	Halifax/ Trafalgar	East	South	25.7	7.3	P5	Completed
1220	Trafalgar St	Halifax/ Trafalgar	West	North	8.5	9.0	P5	Completed
1214	Nayland Rd	Nayland/ Norwich	East	West	93.0	15.0	P5	Completed
1208	Tahunanui Dr	Tahunanui/ Bisley	East	South	27.4	19.0	P5	Completed

**Results – P5**

ID	Street	Start Location	Side	Direction	Start Point	Distance	Type	Status
1203	Main Rd Stoke	Songer/Main Rd	South	West	96.3	35.5	P5	Completed
1198	Main Rd Stoke	Tainui/Main Rd	West	South	188.0	10.0	P5	Completed
1195	Muritai St	Muritai/ Centennial	West	North	239.0	10.0	P5	Completed
957	Wakefield Quay	Collins Street/ Haven Rd	East	South	666.0	6.0	P5	Completed
950	Nayland Rd	Fergusson/ Nayland	East	South	34.5	25.5	P5	Completed
917	Trafalgar St	Trafalgar/ Wainui	East	South	107.0	5.0	P5	Completed
895	Collingwood St	Collingwood/ Nile	East	South	10.1	15.0	P5	Completed

**P10****Results – P10**

ID	Street	Start Location	Side	Direction	Start Point	Distance	Type	Status	
3966	Pascoe St	Quarantine Road	Right	North	270.0	11.0	P10	Completed	
2389	Tahunanui Dr	Muritai Street	West	North	75.0	6.0	P10	Completed	
2265	Harley St	Bridge/ Harley	East	South	71.0	12.0	P10	Deleted	For Deletion
2264	Harley St	Bridge/ Harley	East	South	43.5	2.7	P10	Deleted	For Deletion
2214	Montgomery Sq	Hardy St/ Car Park	South	West	0	7.0	P10	Completed	
2152	Main Rd Stoke	Putaitai/ Main Road Stoke	West	South	8.0	25.0	P10	Completed	
2147	Waimea Rd	Main Road Stoke/ Waimea	West	North	3312.0	16.0	P10	Completed	
2134	Main Road Stoke	Songer / Main Rd Stoke	North	East	109.0	22.0	P10	Completed	
2111	Harley St	Bridge / Harley	East	South	69	12	P10	Completed	
2109	Harley St	Bridge / Harley	East	South	39.5	2.8	P10	Completed	
1247	Waimea Rd	Tukuka / Waimea	West	North	10	16	P10	Completed	
1240	Tahunanui Dr	Green / Tahunanui	West	North	15	18	P10	Completed	
1235	Trafalgar Sq	Trafalgar / Selwyn	West	South	13.7	8.1	P10	Completed	
1229	Harley St	Harley /	East	South	69	84	P10	Completed	

<b>Results – P10</b>									
<b>ID</b>	<b>Street</b>	<b>Start Location</b>	<b>Side</b>	<b>Direction</b>	<b>Start Point</b>	<b>Distance</b>	<b>Type</b>	<b>Status</b>	
		Bridge							
1223	Bail St	Songer / Bail	East	South	96	19	P10	Completed	
1217	Haven Rd	St Vincent / Haven	West	North	966	14	P10	Completed	
1211	Tahunanui Dr	Tahunanui / Parkers	West	North	451	12	P10	Completed	
1206	Main Road Stoke	Songer / Main Rd	South	West	183.8	15	P10	Completed	
1201	Roto St	Roto / Parkers	East	East	9.0	14.8	P10	Completed	
1197	Gloucester St	Vanguard / Gloucester	South	West	45.3	20.9	P10	Completed	
1194	Gloucester St	Vanguard / Gloucester	South	West	32.2	3.9	P10	Completed	
949	Brook St	Brook / Moorhouse	West	South	109	11.2	P10	Completed	
940	Collingwood St	Collingwood / Nile	West	South	20.8	18.6	P10	Completed	
581	Waimea Rd	Main Rd Stoke / Waimea	West	North	4364	29	P10	Completed	
580	Waimea Rd	Main Rd Stoke / Waimea	West	North	4344	13	P10	Completed	
578	Waimea Rd	Main Road Stoke/ Waimea	West	North	3269.0	11.0	P10	Completed	
577	Waimea Rd	Main Road Stoke/ Waimea	West	North	3251.0	11.0	P10	Completed	
576	Trafalgar St	Trafalgar/ Hathaway	West	North	183.0	5.8	P10	Completed	
575	Trafalgar St	Trafalgar/ Hathaway	West	North	148.0	21.3	P10	Completed	
569	Haven Rd	St Vincent/ Haven Road	West	North	962.0	17.0	P10	Completed	
286	Nile St	Nile/ Collingwood	North	East	18.4	15.4	P10	Completed	

## **P15**

<b>Results –P15</b>									
<b>ID</b>	<b>Street</b>	<b>Start Location</b>	<b>Side</b>	<b>Direction</b>	<b>Start Point</b>	<b>Distance</b>	<b>Type</b>	<b>Status</b>	
2309	Songer St	Main Rd Stoke? Songer Street Int	West	North	69.0	12.5	P15	Completed	
2306	Songer St	Main Rd Stoke?	West	North	88.0	44.0	P15	Completed	

<b>Results –P15</b>									
<b>ID</b>	<b>Street</b>	<b>Start Location</b>	<b>Side</b>	<b>Direction</b>	<b>Start Point</b>	<b>Distance</b>	<b>Type</b>	<b>Status</b>	
		Songer Street Int							
1241	Wakefield Quay	Millenium (centre of access)/ Wakefield	North	East	51.0	16.0	P15	Completed	
1236	Vanguard St	Rutherford/ Vanguard	East	South	18.7	48.3	P15	Completed	
1230	Rutherford St	Hardy? Rutherford	East	South	11.4	9.8	P15	Completed	
1224	Tahaki St	Tahaki/ East bdy of Library	North	N/A	25.7	20.7	P15	Completed	
1218	Annesbrook Dr	Quarantine/ Annesbrook	West	North	6.0	40.7	P15	Completed	
1207	Nile St	Nile / Milton	South	West	27.6	35.2	P15	Completed	
1202	Bridge St	Milton/ Bridge	North	West	92.4	18.4	P15	Completed	
572	Alton St	Alton/ Nile	West	North	27.9	6.7	P15	Completed	
552	Milton St	Milton/ Grove	West	North	35.1	9.0	P15	Completed	
550	Milton St	Milton/ Grove	West	North	5.0	24.8	P15	Completed	

### **P30**

<b>Results - P30</b>									
<b>ID</b>	<b>Street</b>	<b>Start Location</b>	<b>Side</b>	<b>Direction</b>	<b>Start Point</b>	<b>Distance</b>	<b>Type</b>	<b>Status</b>	
2300	Tahaki St	All entrances to 26 Halifax Street Library Car Park	East	N/A			P30	Completed	
2283	Putaitai St	All entrances to street address 35 Putaitai St	N/A	N/A			P30	Completed	
1308	Trafalgar St	Ajax/ Trafalgar	East	South	4.6	18.4	P30	Completed	
1299	Rutherford St	Nile (centre)/ Rutherford	West	North	44.5	14.5	P30	Deleted	For Deletion
1294	Trafalgar Sq	Trafalgar/ Nile St West	West	South	26.0	8.0	P30	Completed	
1289	Neale Ave	Neale/ Library entrance way (K&C)	West	South	3.2	25.8	P30	Completed	
1284	Tahaki St	Tahaki/ East bdy of	North	N/A	87.2	42.5	P30	Completed	



**Results - P30**

ID	Street	Start Location	Side	Direction	Start Point	Distance	Type	Status	
		Library							
1279	Tahunanui Dr	Tahunanui/ Bisley	East	South	97.5	11.7	P30	Completed	
1274	Tahunanui Dr	Tahunanui/ Bisley	East	South	93.0	6.0	P30	Completed	
1269	St Lawrence St	St Vincent/ Toi Toi	West	North	57.0	6.0	P30	Completed	
1264	St Lawrence St	St Vincent/ Toi Toi	West	North	39.0	10.0	P30	Completed	
1259	St Lawrence St	St Vincent/ Toi Toi	West	North	18.0	8.0	P30	Completed	
1254	St Lawrence St	St Vincent/ Toi Toi	West	South	13.0	10.0	P30	Completed	
1248	St Lawrence St	St Vincent/ Toi Toi	East	South	20.0	12.0	P30	Completed	
1242	Toi Toi St	Toi Toi/ St Vincent	South	West	21.0	16.0	P30	Completed	
1237	Toi Toi St	Toi Toi/ St Vincent	North	West	21.0	16.0	P30	Completed	
1231	Gloucester St	Vanguard/ Gloucester	South	West	135.5	8.3	P30	Completed	
1225	Gloucester St	Vanguard/ Gloucester	South	West	105.1	16.6	P30	Completed	
1219	Gloucester St	Vanguard/ Gloucester	South	West	73.4	23.9	P30	Completed	
1213	Gloucester St	Vanguard/ Gloucester	South	West	18.5	8.7	P30	Completed	
1187	Nile St	Nile/ Alton	North	West	9.2	30.5	P30	Completed	
1092	Gloucester St	Vanguard/ Gloucester	South	West	150.1	5.3	P30	Completed	
953	Trafalgar St	Trafalgar/ Wainui	East	South	80.0	20.0	P30	Completed	
277	Toi Toi St	St Vincents/ Toi Toi	North	East	20.2	17.8	P30	Completed	

**P60**Refer <http://applications/TrafficRestrictions/ViewApps.aspx>.**P120**

<b>Results – P120</b>									
<b>ID</b>	<b>Street</b>	<b>Start Location</b>	<b>Side</b>	<b>Direction</b>	<b>Start Point</b>	<b>Distance</b>	<b>Type</b>	<b>Status</b>	
2266	Bridge St	Harley St to Alton St	Both	east	0	0	P120	Deleted	For Deletion
1183	Wakefield Quay	Millenium (centre of access)/ Wakefield	South	East	42.0	22.0	P120	Completed	
1153	Wakefield Quay	Millenium (centre of access)/ Wakefield	South	East	10.0	30.0	P120	Completed	
1151	Wakefield Quay	Millenium (centre of access)/ Wakefield	North	East	46.0	5.0	P120	Completed	
1148	Wakefield Quay	Millenium (centre of access)/ Wakefield	North	East	20.0	20.0	P120	Completed	
1140	Rutherford St	Nile (centre)/ Rutherford	West	North	0	7.0	P120	Completed	
1138	Rutherford St	Nile (centre)/ Rutherford	West	North	42.2	23.3	P120	Completed	
1135	Rutherford St	Nile (centre)/ Rutherford	West	North	16.5	17.9	P120	Completed	
1132	Rutherford St	Nile (centre)/ Rutherford	West	North	8.6	0	P120	Completed	
1130	Trafalgar Sq	Trafalgar/ Selwyn	West	South	48.0	50.7	P120	Completed	
1127	Trafalgar Sq	Trafalgar/ Selwyn	West	South	21.8	14.9	P120	Completed	
1122	Sussex St	Sussex/ Collingwood	East	North	72.0	16.0	P120	Completed	
1119	Sussex St	Sussex/ Collingwood	West	Nortg	69.0	19.0	P120	Completed	
1116	Sussex St	Sussex/ Collingwood	East	North	60.0	65.0	P120	Completed	
1113	Sussex St	Sussex/ Collingwood	West	North	38.0	42.0	P120	Completed	
1110	Sussex St	Sussex/ Collingwood	West	North	53.0	59.0	P120	Completed	
1107	Sussex St	Sussex/ Collingwood	East	North	50.0	54.0	P120	Completed	
1103	Sussex St	Sussex/ Collingwood	West	North	28.0	32.0	P120	Completed	

**Results – P120**

ID	Street	Start Location	Side	Direction	Start Point	Distance	Type	Status
1099	Shelbourne St	Shelbourne/ Bronte	West	North	425.0	18.0	P120	Completed
1095	Shelbourne St	Shelbourne/ Bronte	West	North	409.0	17.0	P120	Completed
1094	Shelbourne St	Shelbourne/ Bronte	West	North	375.0	27.0	P120	Completed
1093	Nile St	Nile/ Alton	South	West	62.8	18.9	P120	Completed
644	Trafalgar St	Trafalgar/ Grove	East	South	10.4	48.8	P120	Completed
643	Ngaire Pl	Ngaire/ Riverside	West	South	7.0	23.6	P120	Completed
417	Alton St	Alton/ Nile	West	North	44.6	90.7	P120	Completed
285	Riverside	Riverside/ Collingwood	North	East	179.0	65.0	P120	Completed
283	Riverside	Riverside/ Collingwood	South	East	171.0	33.0	P120	Completed

**P180****Results - P180**

ID	Street	Start Location	Side	Direction	Start Point	Distance	Type	Status
3848	Trafalgar St	Elliot Street Int	West	South	60.0	12.0	P180	Completed
2282	Main Rd Stoke	All entrances to street address 486 Main Rd Stoke	N/A	N/A			P180	Completed
2281	Strawbridge Sq	All entrances	N/A	N/A	0	0	P180	Completed
2280	Main Rd Stoke	Putaitai St	West	South	106.8	5.2	P180	Completed
2279	Main Rd Stoke	Putaitai St	West	South	36.0	61.0	P180	Completed
2278	Main Rd Stoke	Putaitai St	West	North	49.4	11.0	P180	Completed
2277	Main Rd Stoke	Putaitai St	West	North	15.5	10.0	P180	Completed
2276	Putaitai St	Neale Ave	North	East	100.0	11.6	P180	Completed
2275	Putaitai St	Neale Ave	North	East	46.6	34.8	P180	Completed
2274	Putaitai St	Main Rd Stoke	South	West	6.8	23.2	P180	Completed
2273	Putaitai St	Main Rd Stoke	South	West	51.7	10.0	P180	Completed
2272	Putaitai St	Neale Ave	North	East	14.3	15.7	P180	Completed
2271	Putaitai St	Main Rd Stoke	South	West	100.0	17.0	P180	Completed
2270	Putaitai St	Main Rd Stoke	South	West	70.8	21.5	P180	Completed

## Schedule 9 – No Stopping and No Parking Areas

### No Stopping Areas

Refer <http://applications/TrafficRestrictions/ViewApps.aspx>

### No Parking Areas

Results – No Parking Areas								
ID	Street	Start Location	Side	Direction	Start Point	Distance	Type	Status
2107	Harley St	Bridge/ Harley	East	South	33.3	3.7	No Parking	Completed
2298	Montgomery Sq	All entrances	N/A	N/A	N/A	N/A	No Parking of unauthorised vehicles	

## Schedule 10 – Restricted Parking Areas

### Restricted Parking Areas

Results – Restricted Parking Areas								
ID	Street	Start Location	Side	Direction	Start Point	Distance	Type	Status
902	Tahaki St	Tahaki/ East bdy of Library	North	N/A	51.3	18.0	Restricted Parking	Completed
900	Tahunanui Dr	Tahunanui/ Parkers	West	North	1227.7	6.6	Restricted Parking	Completed

## **Schedule 11 – Method of Payment and Prescribed Fees and Charges**

- i) Method of Payment
  - a) The method of payment in relation to any meter within a pay and display or metered area shall be coin in New Zealand currency in the denomination of 20 and 50 cents and \$1 and \$2.
  - b) The method of payment in respect of any permission or authority given pursuant to this bylaw shall be cash, cheque or electronic funds transfer of New Zealand currency.
- ii) Prescribed Fee (GST Inclusive).
  - a) The prescribed fee in relation to any meter within a pay and display or metered area shall be free for the first 60 minutes and \$1.50 per hour on the road and in the Montgomery Square, Buxton square, Wakatu Square and Millers Acre parking areas. The first hour of parking is free of charge provided that in any pay and display area a valid ticket is displayed for the duration of parking, including the first 60 minutes.
  - b) The prescribed fee in relation to the long term use of any space within a metered area for which a meter hood may be available is \$10 per day. The prescribed fee in relation to long term use of on street or off street car parks serviced by a vending machine is \$25.00/park/week.
  - c) The prescribed fee for a residents parking permit is \$20 per year within an existing resident parking area. Requests for new residents parking areas require an additional fee.
- iii) The Council may by resolution alter the method of payment or prescribed fee listed above.

**Schedule 12 – Times of Operation of Parking Meters and Pay and Display Areas**

1. Weekdays – 8.00am to 5.00pm
2. Saturdays –9.00am to 1.00pm
3. Sundays and Public Holidays as defined in the Holidays Act 2003 – not operating

## **Schedule 13 – Stop Signs**

Refer <http://applications/TrafficRestrictions/ViewApps.aspx>.



## **Schedule 14 – Give Way Signs**

Refer <http://applications/TrafficRestrictions/ViewApps.aspx>

### **Schedule 15 – Shared Zones (Roads)**

1. Locking Street - from 56 Wellington Road to 74 Locking Street.
2. Queens Road - from 62 Queens Road to 44 Russell Street
3. Iwa Road - from 52 Atawhai Drive to 39 Iwa Road