

THE MARINA MAILER

A quarterly communication from Nelson Marina
Issue 8 / Autumn 2017



Marina Team: Busy Summer Season

For many of us, it feels like summer made a belated entrance.

However, the late start didn't deter visiting boaties. Bruce Thompson, Marina Supervisor, says that it has been a pretty good summer for boating and at one stage there were eight vessels over 15m in length visiting the Marina. While unusual to have so many large boats in the Marina at one time, staff accommodated visitors by judicious shuffling and sub-letting berths where possible.

Bruce says that the recent warm weather and bumper tourist season has meant a lot more people walking around the Marina. He urges all boat-owners to put valuable items out of sight and to be vigilant with security. If you see anything unusual, contact the Marina Office.

Bruce's other tip is to check that bilge pumps and float switches are operating correctly. He has had a couple of recent instances where these weren't working and boats filled up with water. In one case, the Coastguard had to pump a boat out, leading to considerable financial and personal inconvenience for the owner.

Summer Boating: Maintenance

There's a reason stainless steel is not called 'never-stain steel'. It stains less – it is not immune to corrosion. If you see tell-tale signs of rust emerging from a stainless deck fitting, there's a good chance that something underneath is not happy. You might have jibed heavily and wrenched the shroud mounts, or have been helped by well-meaning crew pushing the tops of stations as you berth. Water will get under the deck fitting and, with the help of a little electrolysis, chew through the most healthy-looking bolts and screws. You'll likely be getting a leak through the deck as well.

As soon as you see a rust stain, it's best to do something about it. Remove the fitting and clean the corrosion, replace it with new stainless fasteners, and reset it with a liberal amount of silicon or silastic sealer. But, how to clean off the rust?

Paul Liebezeit of MI Stainless on Vickerman Street recommends:

- A regular hot soapy wash to keep the steel clean in the first instance.
- Autosol or Jiff with a soft cloth for a regular clean on steel that has mild rust stain. Don't use steel wool. If the more effort is required, use a Scotch-Brite type pad.
- A soak and scrub with a phosphoric acid-based product for heavier rust stains, particularly when it's on gel-coat. Grunt Emer-Gel is a NZ-made option.
- A stainless wire brush or grinding wheel for heavier corrosion.

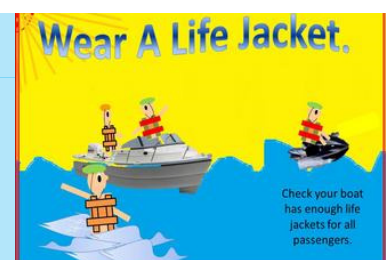
For wire brushing or grinding it's important that the wire brush or grinding wheel is also stainless, or made for stainless work; otherwise your fitting risks contamination by mild steel and, very quickly, looking worse than before you started. Using a stainless wire brush on mild steel and then using it on stainless will result in contamination. And remember, no grinding work in the marina.



Communications: Please Talk to Us

The Marina Office team are always happy to hear about ways that facilities and services at the Marina can be improved.

The Marina Office has a 24-hour phone (546 7768) and can be contacted in emergency situations e.g. fire, sunk vessel or oil spill. Other 24-hour emergency numbers are 111 for fire/ambulance/police or Port Nelson on phone 539 3841.



Marina Noticeboard

- A community clean-up of Tasman Bay beaches between Tonga Island and Cable Bay took place on 4 March. This is the biggest community conservation project in the region and is held annually, as part of Seaweeek. The event is run by DOC, in partnership with Nelson City Council, Tasman District Council and Nelmac. This year, over 600 volunteers collected 4.8 tonnes of rubbish from 300 km of beach.
- No current Electrical Warrant of Fitness (EWO_F) means no connection to shore power. National changes to the EWO_F regulations mean that we now have more 'teeth' to enforce the standards. Nelson Marina expects all connections to conform with national standards by end of June 2017. After this time, if you don't have an EWO_F, you won't be able to leave your dehumidifier and battery charger running while you are away. Nelson Marina rules require all power leads to be tested and tagged every 12 months.
- Improvements in the hardstand area are ongoing. New signage has been put in place and planning is underway to improve safety at the haul-out wharf area to alert people to the risk of falling from a great height. The electrical supply to the hardstand will be upgraded this Autumn. Otherwise, it is business as usual at the haul-out facility, which operates weekdays between 7.30am and 4.00pm.

Business Profile

Each quarter, we introduce a business that operates in the Marina. Owning a boat means that there is always an opportunity for maintenance. Abel Marine, who operate in the Marina want to make it cheaper and environment-friendly as you do this.

Services offered by Brent and Charmaine include: antifouling, polishing, regular vehicle servicing, osmosis treatment, fibre glassing and scaffolding for hire. Brent and Charmaine live in a boat on a swing mooring in Tasman Bay and over the years have seen the weed growth increase. They want to do their bit to help clean up our precious sea environment.

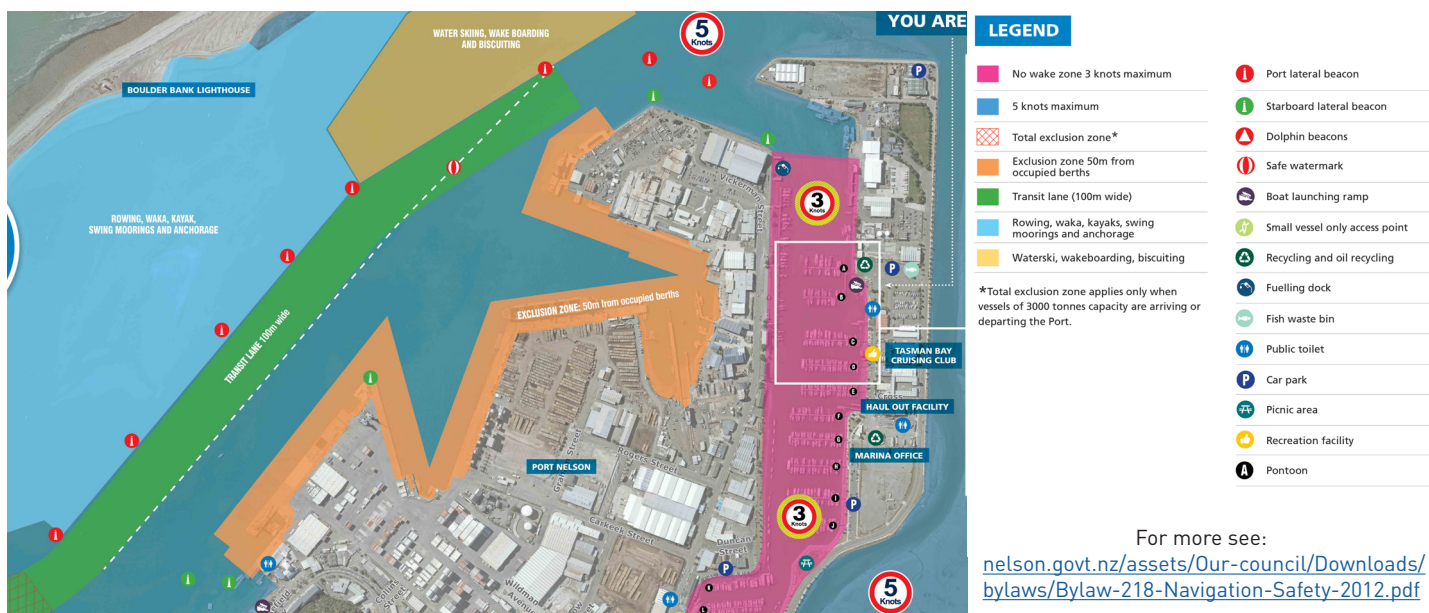
Telephone is the best way to get hold of Brent (021 329 474) and Charmaine (021 931 130).

Boat Rules: Etiquette and Safety

If you are a sensible skipper who makes considered decisions and generally behaves on the water, then it is a good time for all.

To make sure that all users have fun, certain areas of Nelson Harbour are set aside for specified recreational purposes. These zones do not give sole right of use but when those priority activities are taking place, other users should act appropriately e.g. avoid the area.

We particularly draw your attention to the travelling speeds within the Marina, which are in place to ensure that the Marina is an enjoyable place for everyone. One thing to remember when inside the Harbour area is that if you are creating a wake, you are probably going too fast. Three (3) knots is a walking speed and five (5) knots is a fast walking or swimming pace.



For more see:

nelson.govt.nz/assets/Our-council/Downloads/bylaws/Bylaw-218-Navigation-Safety-2012.pdf

Your Nelson Marina



Bruce Thompson
Marina Supervisor
Nelmac Facilities
Management
e: bthompson@nelmac.co.nz



Paul Jonkers
Assistant Marina Supervisor
Nelmac Facilities
Management
e: marina@nelmac.co.nz



Annie Guyatt
Assistant Marina Supervisor
Nelmac Facilities
Management
e: marina@nelmac.co.nz